

# RISK AND VOLATILITY: ECONOMETRIC MODELS AND FINANCIAL PRACTICE

Nobel Lecture, December 8, 2003<sup>1</sup>

by

ROBERT F. ENGLE III

New York University, Department of Finance (Salomon Centre), 44 West Fourth Street, New York, NY 10012-1126, USA.

## INTRODUCTION

The advantage of knowing about risks is that we can change our behavior to avoid them. Of course, it is easily observed that to avoid all risks would be impossible; it might entail no flying, no driving, no walking, eating and drinking only healthy foods and never being touched by sunshine. Even a bath could be dangerous. I could not receive this prize if I sought to avoid all risks. There are some risks we choose to take because the benefits from taking them exceed the possible costs. Optimal behavior takes risks that are worthwhile. This is the central paradigm of finance; we must take risks to achieve rewards but not all risks are equally rewarded. Both the risks and the rewards are in the future, so it is the expectation of loss that is balanced against the expectation of reward. Thus we optimize our behavior, and in particular our portfolio, to maximize rewards and minimize risks.

This simple concept has a long history in economics and in Nobel citations. Markowitz (1952) and Tobin (1958) associated risk with the variance in the value of a portfolio. From the avoidance of risk they derived optimizing portfolio and banking behavior. Sharpe (1964) developed the implications when all investors follow the same objectives with the same information. This theory is called the Capital Asset Pricing Model or CAPM, and shows that there is a natural relation between expected returns and variance. These contributions were recognized by Nobel prizes in 1981 and 1990.

Black and Scholes (1972) and Merton (1973) developed a model to evaluate the pricing of options. While the theory is based on option replication arguments through dynamic trading strategies, it is also consistent with the CAPM. Put options give the owner the right to sell an asset at a particular

<sup>1</sup> This paper is the result of more than two decades of research and collaboration with many many people. I would particularly like to thank the audiences in B.I.S., Stockholm, Uppsala, Cornell and the University de Savoie for listening as this talk developed. David Hendry, Tim Bollerslev, Andrew Patton and Robert Ferstenberg provided detailed suggestions. Nevertheless, all lacunas remain my responsibility.

price at a time in the future. Thus these options can be thought of as insurance. By purchasing such put options, the risk of the portfolio can be completely eliminated. But what does this insurance cost? The price of protection depends upon the risks and these risks are measured by the variance of the asset returns. This contribution was recognized by a 1997 Nobel prize.

When practitioners implemented these financial strategies, they required estimates of the variances. Typically the square root of the variance, called the volatility, was reported. They immediately recognized that the volatilities were changing over time. They found different answers for different time periods. A simple approach, sometimes called *historical volatility*, was and remains widely used. In this method, the volatility is estimated by the sample standard deviation of returns over a short period. But, what is the right period to use? If it is too long, then it will not be so relevant for today and if it is too short, it will be very noisy. Furthermore, it is really the volatility over a future period that should be considered the risk, hence a forecast of volatility is needed as well as a measure for today. This raises the possibility that the forecast of the average volatility over the next week might be different from the forecast over a year or a decade. Historical volatility had no solution for these problems.

On a more fundamental level, it is logically inconsistent to assume, for example, that the variance is constant for a period such as one year ending today and also that it is constant for the year ending on the previous day but with a different value. A theory of dynamic volatilities is needed; this is the role that is filled by the ARCH models and their many extensions that we discuss today.

In the next section, I will describe the genesis of the ARCH model, and then discuss some of its many generalizations and widespread empirical support. In subsequent sections, I will show how this dynamic model can be used to forecast volatility and risk over a long horizon and how it can be used to value options.

## THE BIRTH OF THE ARCH MODEL

The ARCH model was invented while I was on sabbatical at the London School of Economics in 1979. Lunch in the Senior Common Room with David Hendry, Dennis Sargan, Jim Durbin and many leading econometricians provided a stimulating environment. I was looking for a model that could assess the validity of a conjecture of Milton Friedman (1977) that the unpredictability of inflation was a primary cause of business cycles. He hypothesized that the level of inflation was not a problem; it was the uncertainty about future costs and prices that would prevent entrepreneurs from investing and lead to a recession. This could only be plausible if the uncertainty were changing over time so this was my goal. Econometricians call this heteroskedasticity. I had recently worked extensively with the Kalman Filter and knew that a likelihood function could be decomposed into the sum of its predictive or conditional densities. Finally, my colleague Clive Granger with whom I share this prize, had recently developed a test for bilinear time series

models based on the dependence over time of squared residuals. That is, squared residuals often were autocorrelated even though the residuals themselves were not. This test was frequently significant in economic data; I suspected that it was detecting something besides bilinearity but I didn't know what.

The solution was *autoregressive conditional heteroskedasticity* or ARCH, a name invented by David Hendry. The ARCH model described the forecast variance in terms of current observables. Instead of using short or long sample standard deviations, the ARCH model proposed taking weighted averages of past squared forecast errors, a type of weighted variance. These weights could give more influence to recent information and less to the distant past. Clearly the ARCH model was a simple generalization of the sample variance.

The big advance was that the weights could be estimated from historical data even though the true volatility was never observed. Here is how this works. Forecasts can be calculated every day or every period. By examining these forecasts for different weights, the set of weights can be found that make the forecasts closest to the variance of the next return. This procedure, based on Maximum Likelihood, gives a systematic approach to the estimation of the optimal weights. Once the weights are determined, this dynamic model of time varying volatility can be used to measure the volatility at any time and to forecast it into the near and distant future. Granger's test for bilinearity turned out to be the optimal or Lagrange Multiplier test for ARCH and is widely used today.

There are many benefits to formulating an explicit dynamic model of volatility. As mentioned above, the optimal parameters can be estimated by Maximum Likelihood. Tests of the adequacy and accuracy of a volatility model can be used to verify the procedure. One-step and multi-step forecasts can be constructed using these parameters. The unconditional distributions can be established mathematically and are generally realistic. Inserting the relevant variables into the model can test economic models that seek to determine the causes of volatility. Incorporating additional endogenous variables and equations can similarly test economic models about the consequences of volatility. Several applications will be mentioned below.

David Hendry's associate, Frank Srba wrote the first ARCH program. The application that appeared in Engle (1982) was to inflation in the U.K. since this was Friedman's conjecture. While there was plenty of evidence that the uncertainty in inflation forecasts was time varying, it did not correspond to the U.K. business cycle. Similar tests for U.S. inflation data, reported in Engle (1983), confirmed the finding of ARCH but found no business cycle effect. While the trade-off between risk and return is an important part of macroeconomic theory, the empirical implications are often difficult to detect as they are disguised by other dominating effects, and obscured by the reliance on relatively low frequency data. In finance, the risk/return effects are of primary importance and data on daily or even intra-daily frequencies are readily available to form accurate volatility forecasts. Thus finance is the field in which the great richness and variety of ARCH models developed.

## GENERALIZING THE ARCH MODEL

Generalizations to different weighting schemes can be estimated and tested. The very important development by my outstanding student Tim Bollerslev (1986), called Generalized Autoregressive Conditional Heteroskedasticity or GARCH, is today the most widely used model. This essentially generalizes the purely autoregressive ARCH model to an autoregressive moving average model. The weights on past squared residuals are assumed to decline geometrically at a rate to be estimated from the data. An intuitively appealing interpretation of the GARCH (1,1) model is easy to understand. The GARCH forecast variance is a weighted average of three different variance forecasts. One is a constant variance that corresponds to the long run average. The second is the forecast that was made in previous period. The third is the new information that was not available when the previous forecast was made. This could be viewed as a variance forecast based on one period of information. The weights on these three forecasts determine how fast the variance changes with new information and how fast it reverts to its long run mean.

A second enormously important generalization was the Exponential GARCH or EGARCH model of Dan Nelson (1992) who prematurely passed away in 1995 to the great loss of our profession as eulogized by Bollerslev and Rossi (1995). In his short academic career, his contributions were extremely influential. He recognized that volatility could respond asymmetrically to past forecast errors. In a financial context, negative returns seemed to be more important predictors of volatility than positive returns. Large price declines forecast greater volatility than similarly large price increases. This is an economically interesting effect that has wide ranging implications to be discussed below.

Further generalizations have been proposed by many researchers. There is now an alphabet soup of ARCH models that include: AARCH, APARCH, FIGARCH, FIEGARCH, STARCH, SWARCH, GJR-GARCH, TARCH, MARCH, NARCH, SNPARCH, SPARCH, SQGARCH, CESGARCH, Component ARCH, Asymmetric Component ARCH, Taylor-Schwert, Student-t-ARCH, GED-ARCH, and many others that I have regrettably overlooked. Many of these models were surveyed in Bollerslev, Chou and Kroner (1992), Bollerslev (1994), Engle (2002b), and Engle and Ishida (2002). These models recognize that there may be important non-linearity, asymmetry and long memory properties of volatility and that returns can be non-normal with a variety of parametric and non-parametric distributions.

A closely related but econometrically distinct class of volatility models called Stochastic Volatility or SV models have also seen dramatic development. See for example, Clark (1973), Taylor (1986), Harvey, Ruiz and Shephard (1994), Taylor (1994). These models have a different data generating process which makes them more convenient for some purposes but more difficult to estimate. In a linear framework, these models would simply be different representations of the same process; but in this non-linear setting, the alternative specifications are not equivalent, although they are close approximations.

## MODELING FINANCIAL RETURNS

The success of the ARCH family of models is attributable in large measure to the applications in finance. While the models have applicability for many statistical problems with time series data, they find particular value for financial time series. This is partly because of the importance of the previously discussed trade-off between risk and return for financial markets, and partly because of three ubiquitous characteristics of financial returns from holding a risky asset. Returns are almost unpredictable, they have surprisingly large numbers of extreme values and both the extremes and quiet periods are clustered in time. These features are often described as *unpredictability*, *fat tails* and *volatility clustering*. These are precisely the characteristics for which an ARCH model is designed. When volatility is high, it is likely to remain high, and when it is low it is likely to remain low. However, these periods are time limited so that the forecast is sure to eventually revert to less extreme volatilities. An ARCH process produces dynamic, mean reverting patterns in volatility that can be forecast. It also produces a greater number of extremes than would be expected from a standard normal distribution, since the extreme values during the high volatility period are greater than could be anticipated from a constant volatility process.

The GARCH (1,1) specification is the workhorse of financial applications. It is remarkable that one model can be used to describe the volatility dynamics of almost any financial return series. This applies not only to US stocks but also to stocks traded in most developed markets, to most stocks traded in emerging markets, and to most indices of equity returns. It applies to exchange rates, bond returns and commodity returns. In many cases, a slightly better model can be found in the list of models above, but GARCH is generally a very good starting point.

The widespread success of GARCH (1,1) begs to be understood. What theory can explain why volatility dynamics are similar in so many different financial markets? In developing such a theory, we must first understand why asset prices change. Financial assets are purchased and owned because of the future payments that can be expected. Because these payments are uncertain and depend upon unknowable future developments, the fair price of the asset will require forecasts of the distribution of these payments based on our best information today. As time goes by, we get more information on these future events and re-value the asset. So at a basic level, financial price volatility is due to the arrival of new information. Volatility clustering is simply clustering of information arrivals. The fact that this is common to so many assets is simply a statement that news is typically clustered in time.

To see why it is natural for news to be clustered in time, we must be more specific about the information flow. Consider an event such as an invention that will increase the value of a firm because it will improve future earnings and dividends. The effect on stock prices of this event will depend on economic conditions in the economy and in the firm. If the firm is near bankruptcy, the effect can be very large and if it is already operating at full cap-

acity, it may be small. If the economy has low interest rates and surplus labor, it may be easy to develop this new product. With everything else equal, the response will be greater in a recession than in a boom period. Hence we are not surprised to find higher volatility in economic downturns even if the arrival rate of new inventions is constant. This is a slow moving type of volatility clustering that can give cycles of several years or longer.

The same invention will also give rise to a high frequency volatility clustering. When the invention is announced, the market will not immediately be able to estimate its value on the stock price. Agents may disagree but be sufficiently unsure of their valuations that they pay attention to how others value the firm. If an investor buys until the price reaches his estimate of the new value, he may revise his estimate after he sees others continue to buy at successively higher prices. He may suspect they have better information or models and consequently raise his valuation. Of course, if the others are selling, then he may revise his price downward. This process is generally called *price discovery* and has been modeled theoretically and empirically in market microstructure. It leads to volatility clustering at a much higher frequency than we have seen before. This process could last a few days or a few minutes.

But to understand volatility we must think of more than one invention. While the arrival rate of inventions may not have clear patterns, other types of news surely do. The news intensity is generally high during wars and economic distress. During important global summits, congressional or regulatory hearings, elections or central bank board meetings, there are likely to be many news events. These episodes are likely to be of medium duration, lasting weeks or months.

The empirical volatility patterns we observe are composed of all three of these types of events. Thus we expect to see rather elaborate volatility dynamics and often rely on long time series to give accurate models of the different time constants.

## MODELING THE CAUSES AND CONSEQUENCES OF FINANCIAL VOLATILITY

Once a model has been developed to measure volatility, it is natural to attempt to explain the causes of volatility and the effects of volatility on the economy. There is now a large literature examining aspects of these questions. I will only give a discussion of some of the more limited findings for financial markets.

In financial markets, the consequences of volatility are easy to describe although perhaps difficult to measure. In an economy with one risky asset, a rise in volatility should lead investors to sell some of the asset. If there is a fixed supply, the price must fall sufficiently so that buyers take the other side. At this new lower price, the expected return is higher by just enough to compensate investors for the increased risk. In equilibrium, high volatility should correspond to high expected returns. Merton (1980) formulated this theoretical model in continuous time, and Engle, Lilien and Robins (1987) pro-

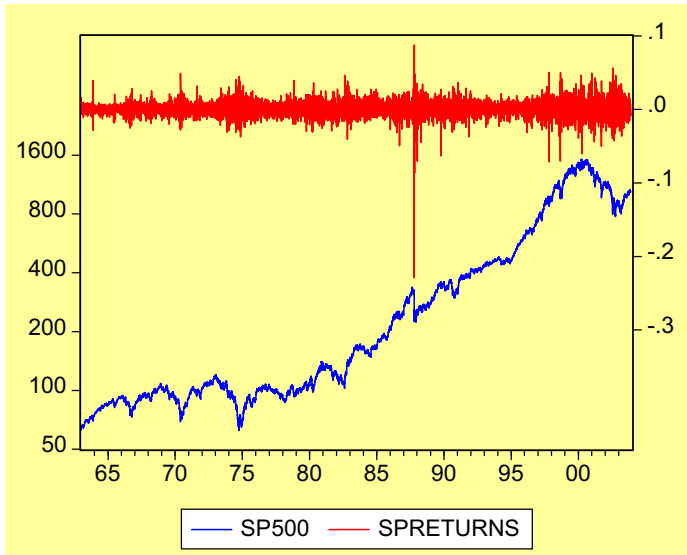


Figure 1. S&P 500 Daily Prices and Returns from January 1963 to November 2003.

posed a discrete time model. If the price of risk were constant over time, then rising conditional variances would translate linearly into rising expected returns. Thus the mean of the return equation would no longer be estimated as zero, it would depend upon the past squared returns exactly in the same way that the conditional variance depends on past squared returns. This very strong coefficient restriction can be tested and used to estimate the price of risk. It can also be used to measure the coefficient of relative risk aversion of the representative agent under the same assumptions.

Empirical evidence on this measurement has been mixed. While Engle *et al.* (1987) find a positive and significant effect, Chou, Engle and Kane (1992), and Glosten, Jagannathan and Runkle (1993), find a relationship that varies over time and may be negative because of omitted variables. French, Schwert and Stambaugh (1987) showed that a positive volatility surprise should and does have a negative effect on asset prices. There is not simply one risky asset in the economy and the price of risk is not likely to be constant, hence the instability is not surprising and does not disprove the existence of the risk return trade-off, but it is a challenge to better modeling of this trade-off.

The causes of volatility are more directly modeled. Since the basic ARCH model and its many variants describe the conditional variance as a function of lagged squared returns, these are perhaps the proximate causes of volatility. It is best to interpret these as observables that help in forecasting volatility rather than as causes. If the true causes were included in the specification, then the lags would not be needed.

A small collection of papers has followed this route. Andersen and Bollerslev (1998b) examined the effects of announcements on exchange rate

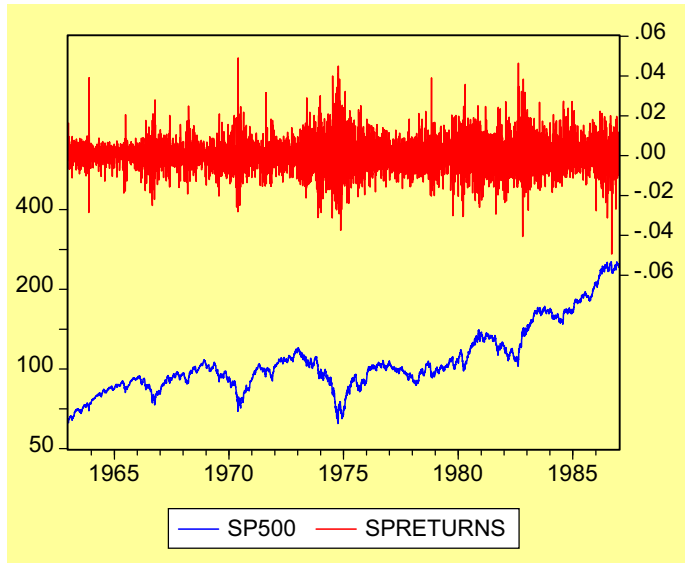


Figure 2. S&P 500 Daily Before 1987.

volatility. The difficulty in finding important explanatory power is clear even if these announcements are responsible in important ways. Another approach is to use the volatility measured in other markets. Engle, Ng and Rothschild (1990) find evidence that stock volatility causes bond volatility in the future. Engle, Ito and Lin (1990) model the influence of volatility in markets with earlier closing on markets with later closing. For example, they examine the influence of currency volatilities in European, Asian markets and the prior day US market on today's US currency volatility. Hamao, Masulis and Ng (1990), Burns, Engle and Mezrich (1998), and others have applied similar techniques to global equity markets.

#### AN EXAMPLE

To illustrate the use of ARCH models for financial applications, I will give a rather extended analysis of the Standard and Poors 500 Composite index. This index represents the bulk of the value in the US equity market. I will look at daily levels of this index from 1963 through late November 2003. This gives a sweep of US financial history that provides an ideal setting to discuss how ARCH models are used for risk management and option pricing. All the statistics and graphs are computed in EViews™ 4.1.

The raw data are presented in (Figure 1) where prices are shown on the left axis. The rather smooth lower curve shows what has happened to this index over the last 40 years. It is easy to see the great growth of equity prices over the period and the subsequent decline after the new millennium. At the

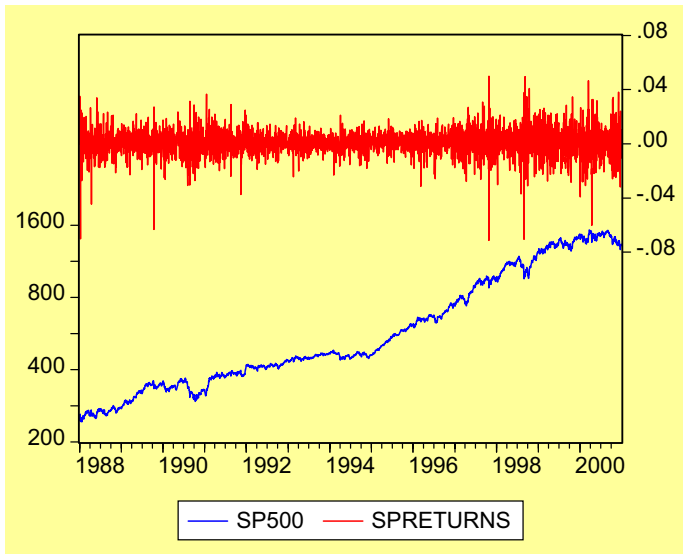


Figure 3. S&P 500 1988 to 2000.

beginning of 1963 the index was priced at \$63 and at the end it was \$1035. That means that one dollar invested in 1963 would have become \$16 by November 21, 2003 (plus the stream of dividends that would have been received as this index does not take account of dividends on a daily basis). If this investor were clever enough to sell his position on March 24, 2000, it would have been worth \$24. Hopefully he was not so unlucky as to have purchased on that day. Although we often see pictures of the level of these indices, it is obviously the relative price from the purchase point to the sale point that matters. Thus economists focus attention on returns as shown at the top of the figure. This shows the daily price change on the right axis (computed as the logarithm of the price today divided by the price yesterday). This return series is centered around zero throughout the sample period even though prices are sometimes increasing and sometimes decreasing. Now the most dramatic event is the crash of October 1987 which dwarfs all other returns in the size of the decline and subsequent partial recovery.

Other important features of this data series can be seen best by looking at portions of the whole history. For example, (Figure 2) shows the same graph before 1987. It is very apparent that the amplitude of the returns is changing. The magnitude of the changes is sometimes large and sometimes small. This is the effect that ARCH is designed to measure and that we have called volatility clustering. There is however another interesting feature in this graph. It is clear that the volatility is higher when prices are falling. Volatility tends to be higher in bear markets. This is the asymmetric volatility effect that Nelson described with his EGARCH model.

Looking at the next sub-period after the 87 crash in (Figure 3), we see the

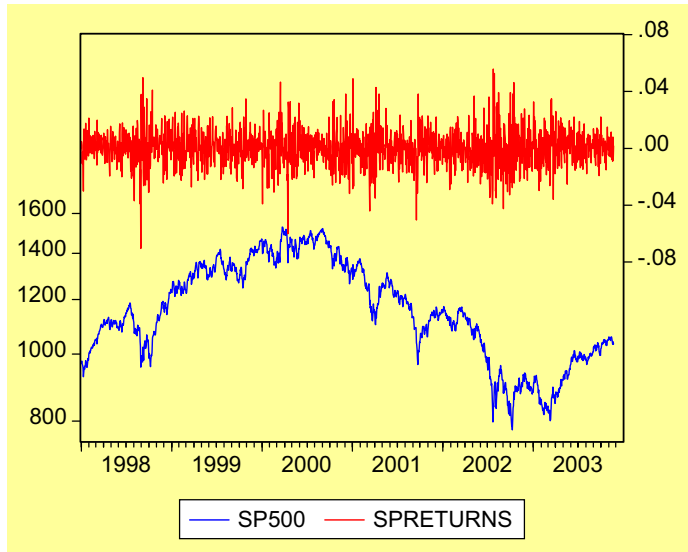


Figure 4. S&P 500 1998 to 2003.

record low volatility period of the middle '90's. This was accompanied by a slow and steady growth of equity prices. It was frequently discussed whether we had moved permanently to a new era of low volatility. History shows that we didn't. The volatility began to rise as stock prices got higher and higher reaching very high levels from 1998 on. Clearly, the stock market was risky from this perspective but investors were willing to take this risk because the returns were so good. Looking at the last period since 1998 in (Figure 4), we see the high volatility continue as the market turned down. Only at the end of the sample, since the official conclusion of the Iraq war, do we see substantial declines in volatility. This has apparently encouraged investors to come back into the market which has experienced substantial price increases.

We now show some statistics that illustrate the three stylized facts mentioned above: almost unpredictable returns, fat tails and volatility clustering. Some features of returns are shown in Table I. The mean is close to zero relative to the standard deviation for both periods. It is .03% per trading day or about 7.8% per year. The standard deviation is slightly higher in the 90's.

Table I. S&P 500 Returns.

SAMPLE	FULL	SINCE 1990
Mean	.0003	.0003
Standard Deviation	.0094	.0104
Skewness	-1.44	-.10
Kurtosis	41.45	6.78

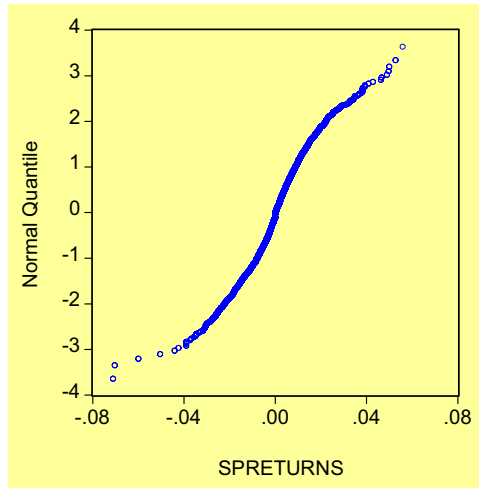


Figure 5. Quantile Plot of S&P500 Returns Post 1990.

These standard deviations correspond to annualized volatilities of 15% and 17%. The skewness is small throughout.

The most interesting feature is the kurtosis which measures the magnitude of the extremes. If returns are normally distributed, then the kurtosis should be three. The kurtosis of the nineties is substantial at 6.8, while for the full sample it is a dramatic 41. This is strong evidence that extremes are more substantial than would be expected from a normal random variable. Similar evidence is seen graphically in (Figure 5), which is a quantile plot for the post 1990 data. This is designed to be a straight line if returns are normally distributed and will have an s-shape if there are more extremes.

The unpredictability of returns and the clustering of volatility can be concisely shown by looking at autocorrelations. Autocorrelations are correlations calculated between the value of a random variable today and its value some days in the past. Predictability may show up as significant autocorrelations in returns, and volatility clustering will show up as significant autocorrelations in squared or absolute returns. (Figure 6) shows both of these plots for the post 1990 data. Under conventional criteria<sup>2</sup>, autocorrelations bigger than .033 in absolute value would be significant at a 5% level. Clearly, the return autocorrelations are almost all insignificant while the square returns have all autocorrelations significant. Furthermore, the squared return autocorrelations are all positive which is highly unlikely to occur by chance. This figure gives powerful evidence for both the unpredictability of returns and the clustering of volatility.

Now we turn to the problem of estimating volatility. The estimates called

<sup>2</sup> The actual critical values will be somewhat greater as the series clearly are heteroskedastic. This makes the case for unpredictability in returns even stronger.

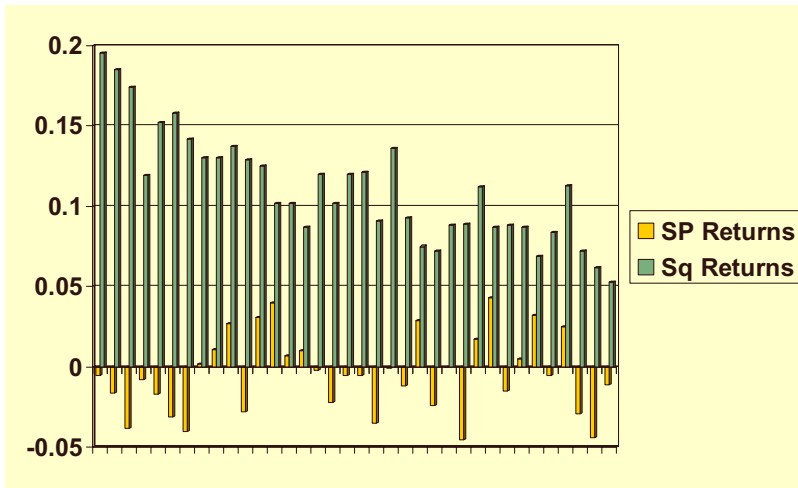


Figure 6. Return and Squared Return Autocorrelations

historical volatility are based on rolling standard deviations of returns. In (Figure 7) these are constructed for 5 day, one year, and five year windows. While each of these approaches may seem reasonable, the answers are clearly very different. The 5 day estimate is extremely variable while the other two are much smoother. The 5 year estimate smoothes over peaks and troughs that the other two see. It is particularly slow to recover after the 87 crash and particularly slow to reveal the rise in volatility in 1998–2000. In just the same way, the annual estimate fails to show all the details revealed by the 5 day volatility. However, some of these details may be just noise. Without any true measure of volatility, it is difficult to pick from these candidates.

The ARCH model provides a solution to this dilemma. From estimating the unknown parameters based on the historical data, we have forecasts for each day in the sample period and for any period after the sample. The natural first model to estimate is the GARCH (1,1). This model gives weights to the unconditional variance, the previous forecast, and the news measured as the square of yesterday’s return. The weights are estimated to be (.004, .941, .055) respectively<sup>3</sup>. Clearly the bulk of the information comes from the previous day forecast. The new information changes this a little and the long run average variance has a very small effect. It appears that the long run variance effect is so tiny that it might not be important. This is incorrect. When forecasting many steps ahead, the long run variance eventually dominates as the importance of news and other recent information fades away. It is naturally small because of the use of daily data.

In this example, we will use an asymmetric volatility model that is some-

<sup>3</sup> For a conventional GARCH model defined as  $h_{t+1} = \omega + \alpha r_t^2 + \beta h_{t+1}$ , the weights are  $(1-\alpha-\beta, \beta, \alpha)$ .

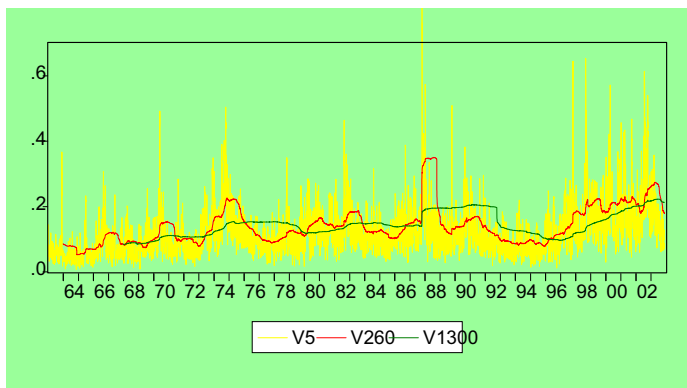


Figure 7. Historical Volatilities with Various Windows.

times called GJR-GARCH for Glosten, *et al.* (1993) or TARCH for Threshold ARCH, Zakoian (1994). The statistical results are given in Table II. In this case there are two types of news. There is a squared return and there is a variable that is the squared return when returns are negative, and zero otherwise. On average, this is half as big as the variance, so it must be doubled implying that the weights are half as big. The weights are now computed on the long run average, the previous forecast, the symmetric news and the negative news. These weights are estimated to be (.002, .931, .029, .038) respectively<sup>4</sup>. Clearly the asymmetry is important since the last term would be zero otherwise. In fact negative returns in this model have more than 3 times the effect of positive returns on future variances. From a statistical point of view, the asymmetry term has a t-statistic of almost 20 and is very significant.

The volatility series generated by this model is given in (Figure 8). The series is more jagged than the annual or 5 year historical volatilities, but is less

Table II. TARCH estimates of SP500 Return Data.

Dependent Variable: SP				
Method: ML - ARCH (Marquardt)				
Date: 11/24/03 Time: 09:27				
Sample(adjusted): 1/03/1963 11/21/2003				
Included observations: 10667 after adjusting endpoints				
Convergence achieved after 22 iterations				
Variance backcast: ON				
	Coefficient	Std. Error	z-Statistic	Prob.
C	0.000301	6.67E-05	4.512504	0.0000
Variance Equation				
C	4.55E-07	5.06E-08	8.980473	0.0000
ARCH(1)	0.028575	0.003322	8.602582	0.0000
(RESID<0)*ARCH(1)	0.076169	0.003821	19.93374	0.0000
GARCH(1)	0.930752	0.002246	414.4693	0.0000

<sup>4</sup>If the model is defined as  $h_t = \omega + \beta h_{t-1} + \alpha r_{t-1}^2 + \gamma r_{t-1}^2 I_{r_{t-1} < 0}$ , then the weights are  $(1 - \alpha - \beta - \frac{\gamma}{2}, \beta, \alpha, \frac{\gamma}{2})$ .

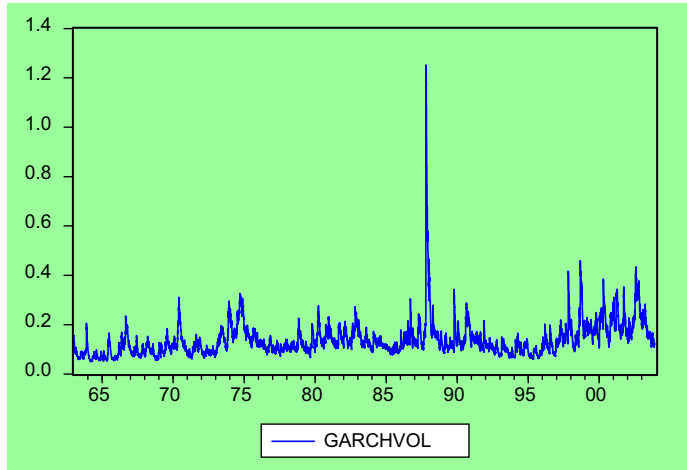


Figure 8. GARCH Volatilities.

variable than the 5 day volatilities. Since it is designed to measure the volatility of returns on the next day, it is natural to form confidence intervals for returns. In (Figure 9) returns are plotted against plus and minus three TARCH standard deviations. Clearly the confidence intervals are changing in a very believable fashion. A constant band would be too wide in some periods and too narrow in others. The TARCH intervals should have 99.7% probability of including the next observation if the data are really normally distributed. The expected number of times that the next return is outside the interval should then be only 29 out of the more than 10,000 days. In fact, there are 75 indicating that there are more outliers than would be expected from normality.

Additional information about volatility is available from the options market. The value of traded options depends directly on the volatility of the underlying asset. A carefully constructed portfolio of options with different strikes will have a value that measures the option market estimate of future volatility under rather weak assumptions. This calculation is now performed by the CBOE for S&P500 options and is reported as the VIX. Two assumptions that underly this index are worth mentioning. The price process should be continuous and there should be no risk premia on volatility shocks. If these assumptions are good approximations, then implied volatilities can be compared with ARCH volatilities. Because the VIX represents the volatility of one-month options, the TARCH volatilities must be forecast out to one month.

The results are plotted in (Figure 10)<sup>5</sup>. The general pattern is quite similar, although the TARCH is a little lower than the VIX. These differences can be

<sup>5</sup> The VIX is adjusted to a 252 trading day year.

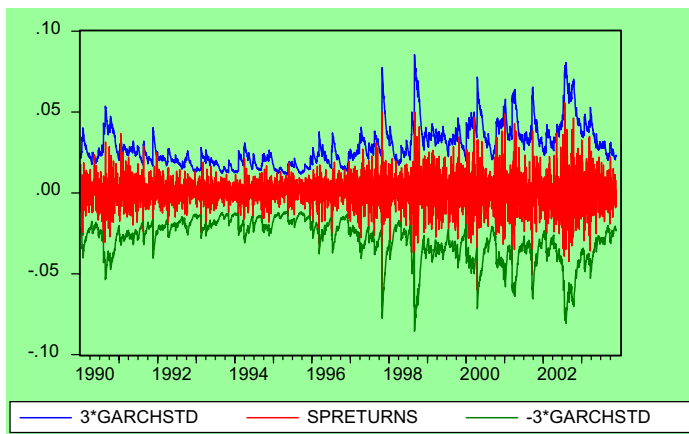


Figure 9. GARCH Confidence Intervals: 3 standard deviations.

attributed to two sources. First the option pricing relation is not quite correct for this situation and does not allow for volatility risk premia or non-normal returns. These adjustments would lead to higher options prices and consequently implied volatilities that were too high. Secondly, the basic ARCH models have very limited information sets. They do not use information on earnings, wars, elections, etc. Hence the volatility forecasts by traders should be generally superior; differences could be due to long lasting information events.

This extended example illustrates many of the features of ARCH/GARCH models and how they can be used to study volatility processes. We turn now to financial practice and describe two widely used applications. In the presentation, some novel implications of asymmetric volatility will be illustrated.

#### FINANCIAL PRACTICE – VALUE AT RISK

Every morning in thousands of banks and financial services institutions around the world, the Chief Executive Officer is presented with a risk profile by his Risk Management Officer. He is given an estimate of the risk of the entire portfolio and the risk of many of its components. He would typically learn the risk faced by the firm's European Equity Division, its US Treasury Bond Division, its Currency Trading Unit, its Equity Derivative Unit, and so forth. These risks may even be detailed for particular trading desks or traders. An overall figure is then reported to a regulatory body although it may not be the same number used for internal purposes. The risk of the company as a whole is less than the sum of its parts since different portions of the risk will not be perfectly correlated.

The typical measure of each of these risks is Value at Risk, often abbreviated as VaR. The VaR is a way of measuring the probability of losses that could occur to the portfolio. The 99% one day VaR is a number of dollars that the

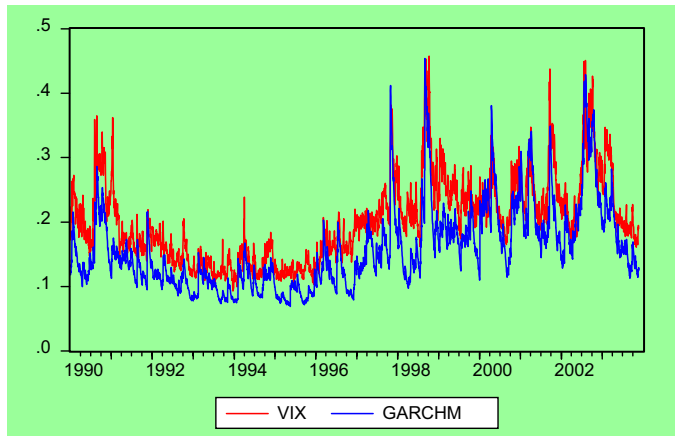


Figure 10. Implied Volatilities and GARCH Volatilities.

manager is 99% certain will be worse than whatever loss occurs on the next day. If the one-day VaR for the currency desk is \$50,000, then the risk officer asserts that only on 1 day out of 100 will losses on this portfolio be greater than \$50,000. Of course this means that on about 2.5 days a year, the losses will exceed the VaR. The VaR is a measure of risk that is easy to understand without knowing any statistics. It is however, just one quantile of the predictive distribution and therefore it has limited information on the probabilities of loss.

Sometimes the VaR is defined on a multi-day basis. A 99% 10 day VaR is a number of dollars that is greater than the realized loss over 10 days on the portfolio with probability .99. This is a more common regulatory standard but is typically computed by simply adjusting the one-day VaR as will be discussed below. The loss figures assume that the portfolio is unchanged over the 10 day period which may be counterfactual.

To calculate the VaR of a trading unit or a firm as a whole, it is necessary to have variances and covariances, or equivalently volatilities and correlations, among all assets held in the portfolio. Typically, the assets are viewed as responding primarily to one or more risk factors that are modeled directly. Riskmetrics™ for example, uses about 400 global risk factors. BARRA uses industry risk factors as well as risk factors based on firm characteristics and other factors. A diversified U.S. equity portfolio would have risks determined primarily by the aggregate market index such as the S&P 500. We will carry forward the example of the previous section to calculate the VaR of a portfolio that mimics the S&P.

The one day 99% VaR of the S&P can be estimated using ARCH. From historical data, the best model is estimated, and then the standard deviation is calculated for the following day. In the case of S&P on November 24, this forecast standard deviation is .0076. To convert this into VaR we must make an assumption about the distribution of returns. If normality is assumed, the

1% point is  $-2.33$  standard deviations from zero. Thus the value at risk is 2.33 times the standard deviation or in the case of Nov 24, it is 1.77%. We can be 99% sure that we will not lose more than 1.77% of portfolio value on Nov 24. In fact the market went up on 24<sup>th</sup> so there were no losses.

The assumption of normality is highly questionable. We observed that financial returns have a surprising number of large returns. If we divide the returns by the TARCH standard deviations, the result will have a constant volatility of one but will have a non-normal distribution. The kurtosis of these “de-volitized returns” or “standardized residuals” is 6.5, which is much less than the unconditional kurtosis, but is still well above normal. From these de-volitized returns, we can find the 1% quantile and use this to give a better idea of the VaR. It turns out to be 2.65 standard deviations below the mean. Thus our portfolio is riskier than we thought using the normal approximation. The one day 99% VaR is now estimated to be 2%.

A 10 day value at risk is often required by regulatory agencies and is frequently used internally as well. Of course, the amount a portfolio can lose in 10 days is a lot greater than it can lose in one day. But how much greater is it? If volatilities were constant, then the answer would be simple; it would be the square root of 10 times as great. Since the 10-day variance is 10 times the one day variance, the 10-day volatility multiplier would be the square root of 10. We would take the one day standard deviation and multiply it by 3.16 and then with normality we would multiply this by 2.33 giving 7.36 times the standard deviation. This is the conventional solution in industry practice. For November 24, the 10-day 99% VaR is 5.6% of portfolio value.

However, this result misses two important features of dynamic volatility models. First, it makes a difference whether the current volatilities are low or high relative to the long run average, so that they are forecast to increase or decrease over the next 10 days. Since the volatility is relatively low in November, the TARCH model will forecast an increase over the next 10 days. In this case, this effect is not very big as the standard deviation is forecast to increase to .0077 from .0076 over the 10-day period.

More interesting is the effect of asymmetry in variance for multi-period returns. Even though each period has a symmetric distribution, the multi-period return distribution will be asymmetric. This effect is simple to understand but has not been widely recognized. It is easily illustrated with a two-step binomial tree, (Figure 11), as used in elementary option pricing models. In the first period, the asset price can either increase or decrease and each outcome is equally likely. In the second period, the variance will depend upon whether the price went up or down. If it went up, then the variance will be lower so that the binomial branches will be relatively close together. If the price went down, the variance will be higher so that the outcomes will be further apart. After two periods, there are four outcomes that are equally likely. The distribution is quite skewed, since the bad outcome is far worse than if the variance had been constant.

To calculate the VaR in this setting, a simulation is needed. The TARCH model is simulated for 10 days using normal random variables and starting

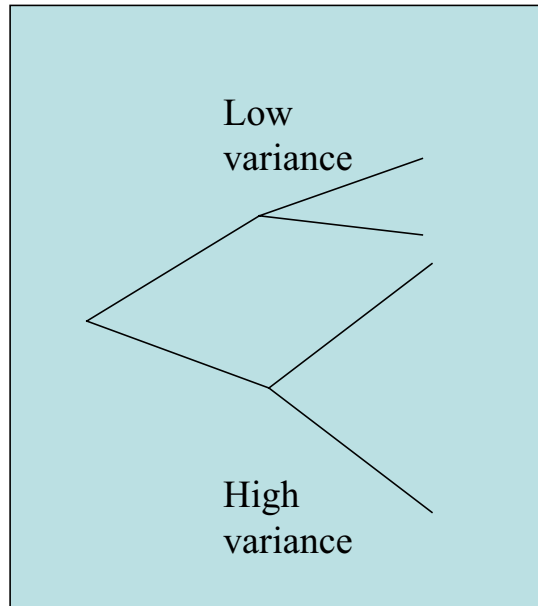


Figure 11. Two Period Binomial Tree with Asymmetric Volatility.

from the values of November 21.<sup>6</sup> This was done 10,000 times and then the worst outcomes were sorted to find the Value at Risk corresponding to the 1% quantile. The answer was 7.89 times the standard deviation. This VaR is substantially larger than the value assuming constant volatility.

To avoid the normality assumption, the simulation can also be done using the empirical distribution of the standardized residuals. This simulation is often called a bootstrap; each draw of the random variables is equally likely to be any observation of the standardized residuals. Thus the October '87 crash observation could be drawn once or even twice in some simulations but not in others. The result is a standard deviation multiplier of 8.52 that should be used to calculate VaR. For our case the November 24, 10 day, 99% VaR is 6.5% of portfolio value.

## FINANCIAL PRACTICE – VALUING OPTIONS

Another important area of financial practice is valuation and management of derivatives such as options. These are typically valued theoretically assuming some particular process for the underlying asset and then market prices of the derivatives are implied by the parameters of the underlying process. This

<sup>6</sup> In the example here, the simulation was started at the unconditional variance so that the time aggregation effect could be examined alone. In addition, the mean was taken to be zero but this makes little difference over such short horizons.

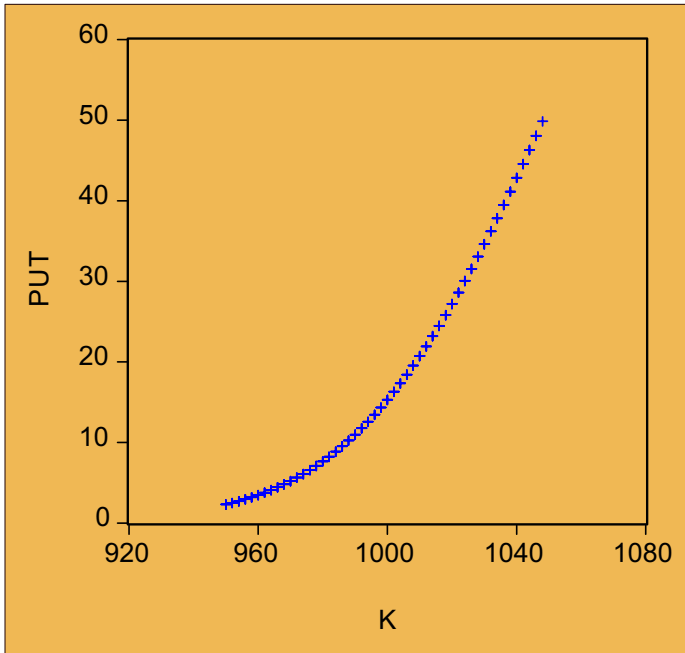


Figure 12. Put Prices from GARCH Simulation.

strategy is often called “arbitrage free pricing.” It is inadequate for some of the tasks of financial analysis. It cannot determine the risk of a derivative position since each new market price may correspond to a different set of parameters and it is the size and frequency of these parameter changes that signify risk. For the same reason, it is difficult to find optimal hedging strategies. Finally, there is no way to determine the price of a new issue or to determine whether some derivatives are trading at discounts or premiums.

A companion analysis that is frequently carried out by derivatives traders is to develop fundamental pricing models that determine the appropriate price for a derivative based on the observed characteristics of the underlying asset. These models could include measures of trading cost, hedging cost and risk in managing the options portfolio.

In this section, a simple simulation based option pricing model will be employed to illustrate the use of ARCH models in this type of fundamental analysis. The example will be the pricing of put options on the S&P 500 that have 10 trading days left to maturity.

A put option gives the owner the right to sell an asset at a particular price, called the strike price, at maturity. Thus if the asset price is below the strike, he can make money by selling at the strike and buying at the market price. The profit is the difference between these prices. If however, the market price is above the strike, then there is no value in the option. If the investor holds the underlying asset in a portfolio and buys a put option, he is guaranteed to

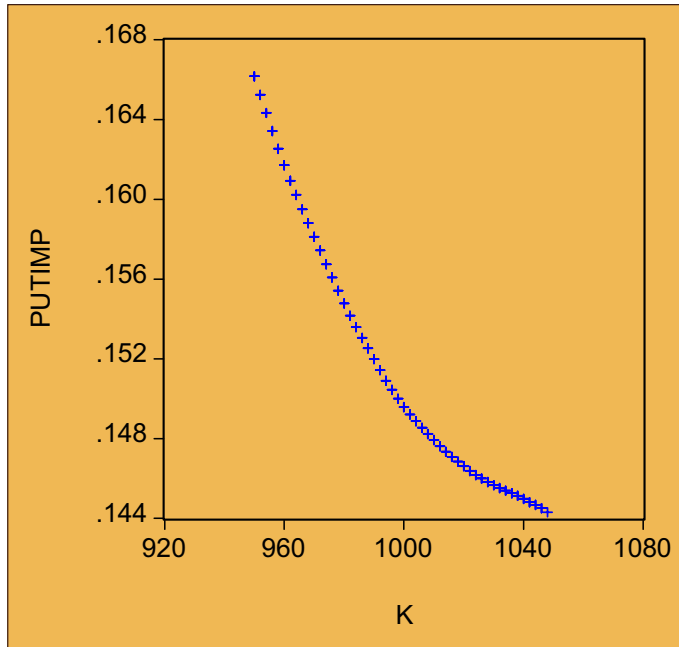


Figure 13. Implied Volatilities from GARCH Simulation.

have at least the strike price at the maturity date. This is why these options can be thought of as insurance contracts.

The simulation works just as in the previous section. The TARCH model is simulated from the end of the sample period, 10,000 times. The bootstrap approach is taken so that non-normality is already incorporated in the simulation. This simulation should be of the “risk neutral” distribution, i.e. the distribution in which assets are priced at their discounted expected values. The risk neutral distribution differs from the empirical distribution in subtle ways so that there is an explicit risk premium in the empirical distribution which is not needed in the risk neutral. In some models such as the Black-Scholes, it is sufficient to adjust the mean to be the risk free rate. In the example, we take this route. The distribution is simulated with a mean of zero, which is taken to be the risk free rate. As will be discussed below, this may not be a sufficient adjustment to risk neutralize the distribution.

From the simulation, we have 10,000 equally likely outcomes for 10 days in the future. For each of these outcomes we can compute the value of a particular put option. Since these are equally likely and since the riskless rate is taken to be zero, the fair value of the put option is the average of these values. This can be done for put options with different strikes. The result is plotted in (Figure 12). The S&P is assumed to begin at 1000 so a put option with a strike of 990 protects this value for 10 days. This put option should sell for \$11. To protect the portfolio at its current value would cost \$15 and to be certain that

it was at least worth 1010 would cost \$21. The VaR calculated in the previous section was \$65 for the 10 day horizon. To protect the portfolio at this point would cost around \$2. These put prices have the expected shape; they are monotonically increasing and convex.

However, these put prices are clearly different from those generated by the Black-Scholes model. This is easily seen by calculating the implied volatility for each of these put options. The result is shown in (Figure 13). The implied volatilities are higher for the out-of-the-money puts than they are for the at-the-money puts and the in-the-money put volatilities are even lower. If the put prices were generated by the Black-Scholes model, these implied volatilities would all be the same. This plot of implied volatilities against strike is a familiar feature for options traders. The downward slope is called a “volatility skew” and corresponds to a skewed distribution of the underlying assets. This feature is very pronounced for index options, less so for individual equity options, and virtually non-existent for currencies where it is called a “smile”. It is apparent that this is a consequence of the asymmetric volatility model and correspondingly, the asymmetry is not found for currencies and is weaker for individual equity options than for indices.

This feature of options prices is strong confirmation of asymmetric volatility models. Unfortunately, the story is more complicated than this. The actual options skew is generally somewhat steeper than that generated by asymmetric ARCH models. This calls into question the risk neutralization adopted in the simulation. There is now increasing evidence that investors are particularly worried about big losses and are willing to pay extra premiums to avoid them. This makes the skew even steeper. The required risk neutralization has been studied by several authors such as Rosenberg and Engle (2002), Bates (2003) and Jackwerth (2000).

## NEW FRONTIERS

It has now been more than 20 years since the ARCH paper appeared. The developments and applications have been fantastic and well beyond anyone’s most optimistic forecasts. But what can we expect in the future? What are the next frontiers?

There appear to be two important frontiers of research that are receiving a great deal of attention and have important promise for applications. These are high frequency volatility models and high dimension multivariate models. I will give a short description of some of the promising developments in these areas.

Merton was perhaps the first to point out the benefits of high frequency data for volatility measurement. By examining the behavior of stock prices on a finer and finer time scale, better and better measures of volatility can be achieved. This is particularly convenient if volatility is only slowly changing so that dynamic considerations can be ignored. Andersen and Bollerslev (1998a) pointed out that intra-daily data could be used to measure the performance of daily volatility models. Andersen, Bollerslev, Diebold and Labys

(2003) and Engle (2002b) suggest how intra-daily data can be used to form better daily volatility forecasts.

However the most interesting question is how to use high frequency data to form high frequency volatility forecasts. As higher and higher frequency observations are used, there is apparently a limit where every transaction is observed and used. Engle (2000) calls such data *ultra high frequency* data. These transactions occur at irregular intervals rather than equally spaced times. In principle, one can design a volatility estimator that would update the volatility every time a trade was recorded. However, even the absence of a trade could be information useful for updating the volatility so even more frequent updating could be done. Since the time at which trades arrive is random, the formulation of ultra high frequency volatility models requires a model of the arrival process of trades. Engle and Russell (1998) propose the Autoregressive Conditional Duration or ACD model for this task. It is a close relative of ARCH models designed to detect clustering of trades or other economic events; it uses this information to forecast the arrival probability of the next event.

Many investigators in empirical market microstructure are now studying aspects of financial markets that are relevant to this problem. It turns out that when trades are clustered, the volatility is higher. Trades themselves carry information that will move prices. A large or medium size buyer will raise prices, at least partly because market participants believe he could have important information that the stock is undervalued. This effect is called price impact and is a central component of *liquidity risk*, and a key feature of volatility for ultra high frequency data. It is also a central concern for traders who do not want to trade when they will have a big impact on prices, particularly if this is just a temporary impact. As financial markets become ever more computer driven, the speed and frequency of trading will increase. Methods to use this information to better understand the volatility and stability of these markets will be ever more important.

The other frontier that I believe will see substantial development and application is *high dimension* systems. In this presentation, I have focused on the volatility of a single asset. For most financial applications, there are thousands of assets. Not only do we need models of their volatilities but also of their correlations. Ever since the original ARCH model was published there have been many approaches proposed for multivariate systems. However, the best method to do this has not yet been discovered. As the number of assets increase, the models become extremely difficult to accurately specify and estimate. Essentially there are too many possibilities. There are few published examples of models with more than 5 assets. The most successful model for these cases is the constant conditional correlation model, CCC, of Bollerslev (1990). This estimator achieves its performance by assuming that the conditional correlations are constant. This allows the variances and covariances to change but not the correlations.

A generalization of this approach is the Dynamic Conditional Correlation, DCC, model of Engle (2002a). This model introduces a small number of pa-

rameters to model the correlations, regardless of the number of assets. The volatilities are modeled with univariate specifications. In this way, large covariance matrices can be forecast. The investigator first estimates the volatilities one at a time, and then estimates the correlations jointly with a small number of additional parameters. Preliminary research on this class of models is promising. Systems of up to 100 assets have been modeled with good results. Applications to risk management and asset allocation follow immediately. Many researchers are already developing related models that could have even better performance. It is safe to predict that in the next several years, we will have a set of useful methods for modeling the volatilities and correlations of large systems of assets.

## REFERENCES

- Andersen, T. G., and Bollerslev, T. (1998a), "Answering the Skeptics: Yes, Standard Volatility Models Do Provide Accurate Forecasts," *International Economic Review*, 39, 885–905.
- Andersen, T. G., and Bollerslev, T. (1998b), "Deutsche Mark-Dollar Volatility: Intraday Activity Patterns, Macroeconomic Announcements, and Longer Run Dependencies," *Journal of Finance*, February, 53, 219–265.
- Andersen, T. G., Bollerslev, T., Diebold, F. X., and Labys, P. (2003), "Modeling and Forecasting Realized Volatility," *Econometrica*, 71, 579–625.
- Bates, D. S. (2003), "Empirical Option Pricing: A Retrospection," *Journal of Econometrics*, 116, 387–404.
- Black, F., and Scholes, M. (1972), "The Valuation of Option Contracts and a Test of Market Efficiency," *Journal of Finance*, 27, 399–417.
- Bollerslev, T. (1986), "Generalized Autoregressive Conditional Heteroskedasticity," *Journal of Econometrics*, 31, 307–327.
- Bollerslev, T. (1990), "Modelling the Coherence in Short-Run Nominal Exchange Rates: A Multivariate Generalized ARCH Model," *Review of Economics and Statistics*, August, 72, 498–505.
- Bollerslev, T., Chou, R. Y., and Kroner, K. F. (1992), "ARCH Modeling in Finance: A Review of the Theory and Empirical Evidence," *Journal of Econometrics*, April May, 52, 5–59.
- Bollerslev, T., Engle R., Nelson D. (1994), "ARCH Models," in *Handbook of Econometrics* (Vol. Volume IV), ed. R. Engle and D. McFadden, Amsterdam: North Holland, pp. 2959–3038.
- Bollerslev, T., and Rossi, P. E. (1995), "Dan Nelson Remembered," *Journal of Business and Economic Statistics*, October, 13, 361–364.
- Burns, P., Engle, R. F., and Mezrich, J. (1998), "Correlations and Volatilities of Asynchronous Data," *Journal of Derivatives*, 1–12.
- Chou, R., Engle, R. F., and Kane, A. (1992), "Measuring Risk-Aversion from Excess Returns on a Stock Index," *Journal of Econometrics*, 52, 201–224.
- Clark, P. K. (1973), "A Subordinated Stochastic Process Model with Finite Variance for Speculative Price," *Econometrica*, 41, 135–156.
- Engle, R. (1982), "Autoregressive Conditional Heteroskedasticity with Estimates of the Variance of U.K. Inflation," *Econometrica*, 50, 987–1008.
- Engle, R. (2002a), "Dynamic Conditional Correlation: A Simple Class of Multivariate Generalized Autoregressive Conditional Heteroskedasticity Models," *Journal of Business & Economic Statistics*, 20, 339–350.
- Engle, R. (2002b), "New Frontiers for ARCH," *Journal of Applied Econometrics*, 17, 425–446.
- Engle, R., and Ishida, I. (2002), "Forecasting Variance of Variance: The Square-Root, the Affine, and the CEV Garch Models," *Department of Finance Working Papers, New York University*.

- Engle, R. F. (1983), "Estimates of the Variance of U.S. Inflation Based Upon the ARCH Model," *Journal of Money, Credit, and Banking*, 15, 286–301.
- Engle, R. F. (2000), "The Econometrics of Ultra-High-Frequency Data," *Econometrica*, January, 68, 1–22.
- Engle, R. F., Ito, T., and Lin, W. L. (1990), "Meteor-Showers or Heat Waves – Heteroskedastic Intradaily Volatility in the Foreign-Exchange Market," *Econometrica*, 58, 525–542.
- Engle, R. F., Lilien, D. M., and Robins, R. P. (1987), "Estimating Time Varying Risk Premia in the Term Structure: The ARCH -M Model," *Econometrica*, March, 55, 391–407.
- Engle, R. F., Ng, V. K., and Rothschild, M. (1990), "Asset Pricing with a Factor-ARCH Covariance Structure: Empirical Estimates for Treasury Bills," *Journal of Econometrics*, July Aug, 45, 213–237.
- Engle, R. F., and Russell, J. R. (1998), "Autoregressive Conditional Duration: A New Model for Irregularly Spaced Transaction Data," *Econometrica*, September, 66, 1127–1162.
- French, K. R., Schwert, G. W., and Stambaugh, R. F. (1987), "Expected Stock Returns and Volatility," *Journal of Financial Economics*, 19, 3–29.
- Friedman, M. (1977), "Nobel Lecture: Inflation and Unemployment," *Journal of Political Economy*, 85, 451–472.
- Glosten, L. R., Jagannathan, R., and Runkle, D. E. (1993), "On the Relation between the Expected Value and the Volatility of the Nominal Excess Return on Stocks," *Journal of Finance*, 48, 1779–1801.
- Hamao, Y., Masulis, R. W., and Ng, V. (1990), "Correlations in Price Changes and Volatility across International Stock Markets," *Review of Financial Studies*, 3, 281–307.
- Harvey, A. C., Ruiz, E., and Shephard, N. (1994), "Multivariate Stochastic Variance Models," *Review of Economic Studies*, 61, 247–264.
- Jackwerth, J. C. (2000), "Recovering Risk Aversion from Option Prices and Realized Returns," *Review of Financial Studies*, 13, 433–451.
- Markowitz, H. M. (1952), "Portfolio Selection," *Journal of Finance*.
- Merton, R. C. (1973), "Theory of Rational Options Pricing," *Bell Journal of Economics and Management Science*, 4, 141–183.
- Merton, R. C. (1980), "On Estimating the Expected Return on the Market: An Exploratory Investigation," *Journal of Financial Economics*, 8, 323–361.
- Rosenberg, J. V., and Engle, R. F. (2002), "Empirical Pricing Kernels," *Journal of Financial Economics*, 64, 341–372.
- Sharpe, W. (1964), "Capital Asset Prices: A Theory of Market Equilibrium under Conditions of Risk," *Journal of Finance*, 19, 425–442.
- Taylor, S. J. (1986), *Modeling Financial Time Series*, John Wiley.
- Taylor, S. J. (1994), "Modeling Stochastic Volatility : A Review and Comparative Study," *Mathematical Finance*, 4, 183–204.
- Tobin, J. (1958), "Liquidity Preference as Behavior Towards Risk," *Review of Economic Studies*, 25, 65–86.
- Zakoian, J. M. (1994), "Threshold Heteroskedastic Models," *Journal of Economic Dynamics & Control*, 18, 931–955.